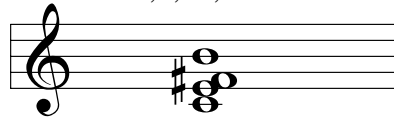


Inversions of a C Major 7#11 Chord

Possible chord tones for CΔ7#11

1,3,#4,7



CΔ7#11()**

X X

E A D G B E

CΔ7#11*(•)

X X

E A D G B E

CΔ7#11**

X X

E A D G B E

CΔ7#11

X X

E A D G B E

CΔ7#11

X X

E A D G B E

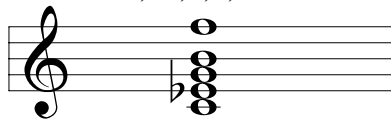
(•) Although unusual on guitar, the 5th can be added as a chord tone in this instance.

(**) This chord contains a b9 interval which can obscure the desired sound chord quality.

Inversions of a C Minor Major 711 Chord

Possible chord tones for C-Δ711

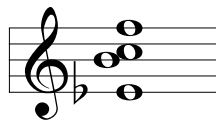
1, b3, 5, 7, 11



C-Δ711
X X

①

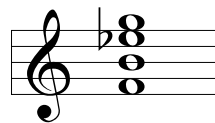
1	1	1	1		
E	A	D	G	B	E



C-Δ711
X X

③

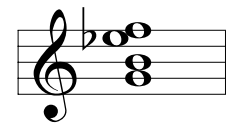
E	A	D	G	B	E



C-Δ711
X X

⑤

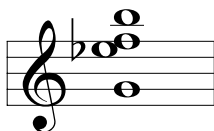
E	A	D	G	B	E



C-Δ711
X X

⑤

E	A	D	G	B	E



C-Δ711
X X

⑨

E	A	D	G	B	E



C-Δ711*
X X

⑩

E	A	D	G	B	E



C-Δ711
X X

⑩

E	A	D	G	B	E

